

DENMAN ROAD, PECKHAM, SE15  
LEASEHOLD - SHARE OF FREEHOLD  
OFFERS IN EXCESS OF £800,000



## SPEC

Bedrooms : 2  
Receptions : 1  
Bathrooms : 2

Lease Length : 991 years remaining  
Service Charge : n/a  
Ground Rent : n/a

## FEATURES

Split-Level Top Floor  
Amazing Terrace  
Two Double Bedrooms  
Slick Styling  
Share of Freehold



DENMAN ROAD SE15

LEASEHOLD - SHARE OF FREEHOLD



DENMAN ROAD SE15

LEASEHOLD - SHARE OF FREEHOLD



Impressive Split-Level Two-Double Bedroom Stunner with Fab Roof Terrace - CHAIN FREE.

You'll be endlessly impressed by this fantastic period conversion. Spread generously over the two upper floors of a handsome Victorian building along what is arguably one of Peckham's premier streets, the property is meticulously presented at every step. Accommodation comprises a wonderful, bright open plan living room with large adjoining modern kitchen, two fantastic double bedrooms, bathroom and shower room. There's a tiptop terrace too which soaks in abundant morning and early afternoon sun. From here you'll enjoy views as far as Canary Wharf! Denman Road has an inimitably eclectic mix of period architecture. It rises gently from Peckham Road to Lyndhurst Grove and sits within a pleasurable five minute ramble of bountiful Bellenden Village. Impress your guests by taking them to the award-winning Toad Bakery, situated only a few minutes walk away toward Camberwell. Transport is a cinch with Peckham Rye Station a seven minute stroll for swift, regular services to London Bridge, Victoria, Elephant and Castle, Blackfriars, Farringdon, Shoreditch and oodles more.

A flat fronted exterior leads off the street through a shared front garden. A well presented communal hallway offers you a carpeted staircase up to your first floor door. A carpeted inner hall leads upward, past some fine fitted storage, to the sizeable landing. The rear return hosts the first of two amazing bedrooms which boasts a lofty double-height vaulted ceiling, twin skylights (with electric blinds) and a further rear-facing window. The main bathroom completes this level nicely donning a jet bath, heated towel rail, white suite and side aspect frosted sash window. There's further recessed storage off the landing. The front-facing L-shaped open-plan living area is wide and bright. It's a fab spot for lounging, dining and entertaining. To the rear you find an adjoining kitchen/diner with sleek light grey cabinets. Appliances include an integrated dishwasher and washing machine, four ring induction hob, NEFF oven and integrated microwave.

Heading upward to the you find the upper landing enjoys more quality carpeting and the same slick tasteful Farrow and Ball trim along the architraves and balustrades. The terrace is accessed from here and offers an amazing entertaining, dining and chill space. Views stretches from Canary Wharf to the city and beyond. The second bedroom is a huge double and takes the lion's share of the top floor. There's eaves storage, tasteful yellow walls (with colour-drenched ceiling) and a fab Juliette balcony from whence you enjoy more views and airiness. A fancy shower room completes the tour nicely.

For coffee, croissants, books, antiques, flowers and dry cleaning services, go no further than Bellenden Village (a 3 minute walk). We love Petitou, The Victoria Inn, Ganapati and The Begging Bowl. The South London Gallery Café is great for impressing visitors with! Rye Lane is tantalisingly close for any amount of culture. The Bussey Building has some fab rooftop bars and even a cinema! The highly considered Villa Nursery is as close - now that's an easy morning drop off! The area has easy access to Peckham Rye (zone 2 and a brisk 5 minute walk) and Denmark Hill stations (also zone 2 and about a 12 minute walk away) for services to London Bridge, Victoria and Blackfriars. The London Overground whizzes you to Clapham, Shoreditch and Canada Water for the Jubilee Line. A whole variety of buses run into town along Peckham Road, just five minutes away. The wide open green spaces of Peckham Rye Park are also within easy reach. Even closer is the very lovely Warwick Gardens. It's a fine spot for a read of the papers.

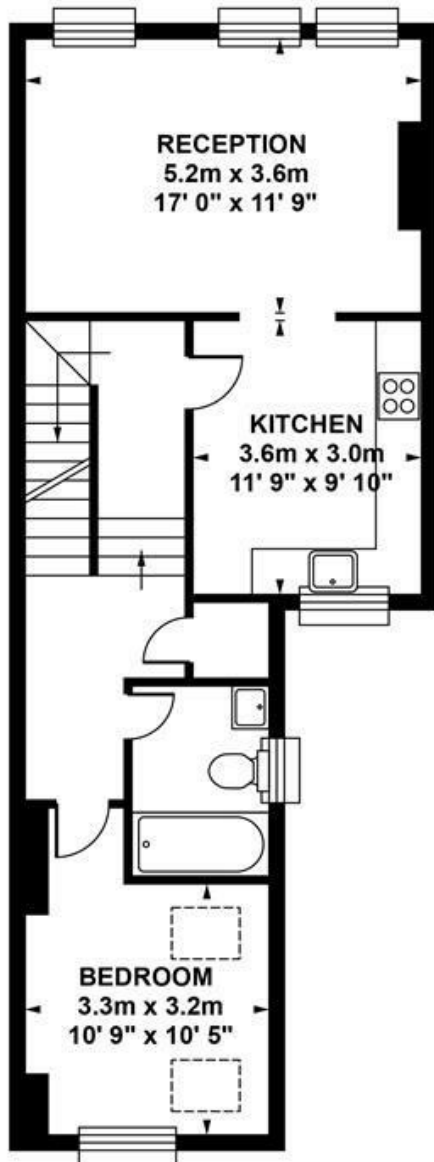
Tenure: Share of Freehold

Lease Length: 991 years remaining

Council Tax Band: C

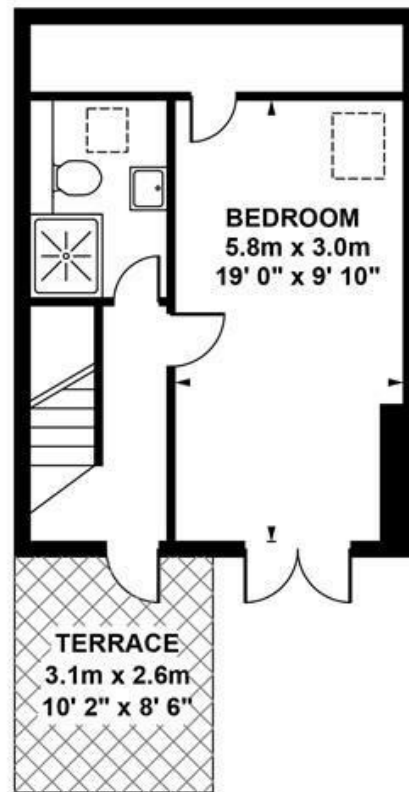
DENMAN ROAD SE15

LEASEHOLD - SHARE OF FREEHOLD



### FIRST FLOOR

Approximate. internal area :  
60.45 sqm / 650 sq ft



### THIRD FLOOR

Approximate. internal area :  
33.32 sqm / 359 sq ft

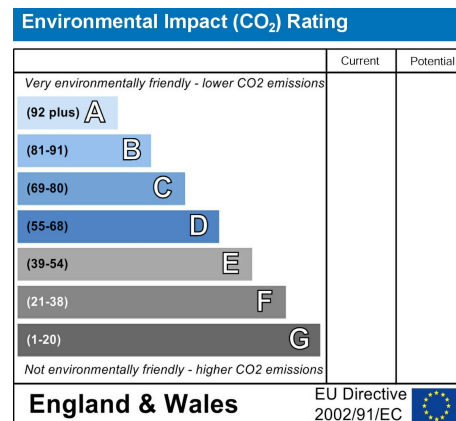
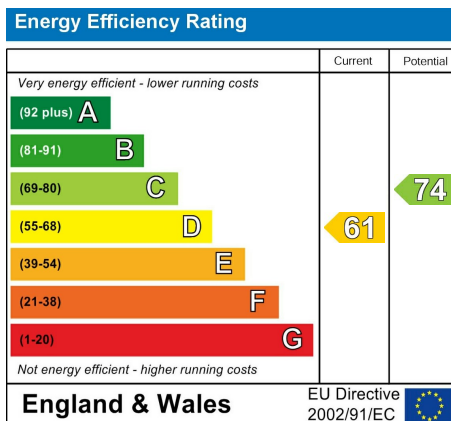
### TOTAL APPROX FLOOR AREA

Approximate. internal area : 93.77 sqm / 1009 sq ft  
Measurements for guidance only / Not to scale



# DENMAN ROAD SE15

LEASEHOLD - SHARE OF FREEHOLD



All information supplied should be checked by your solicitor prior to exchange of contracts. Lease details, measurements, floorplans and photographs are displayed for guide purposes only. We have not carried out a structural survey and the services, appliances and specific settings have not been tested.

